



1 Bedroom Apartment To Let in Morningside

 1  1  0

Perfect Lock Up and Go in Morningside Ideal for professionals, this stylish one bedroom apartment offers convenience, security, and low maintenance living in the heart of sought after Morningside. The open plan layout features a well appointed kitchen, a light filled lounge area, and a spacious bedroom with built-in cupboards.

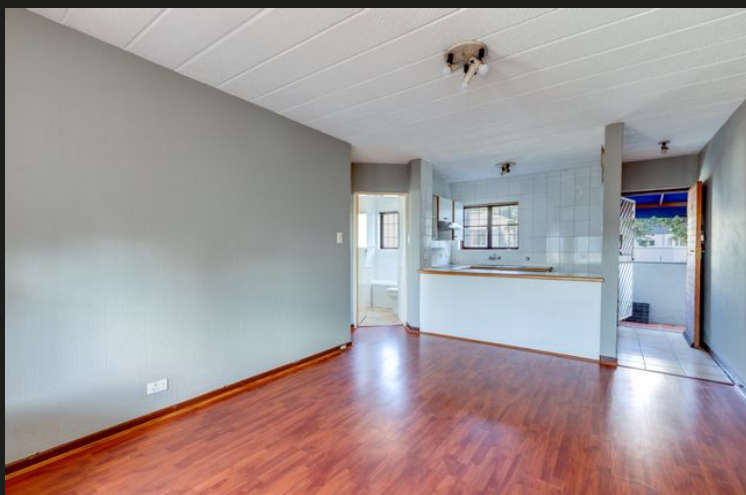
Features

Interior

Bedrooms	1	Bathrooms	1
Kitchens	1	Recep. Rooms	1

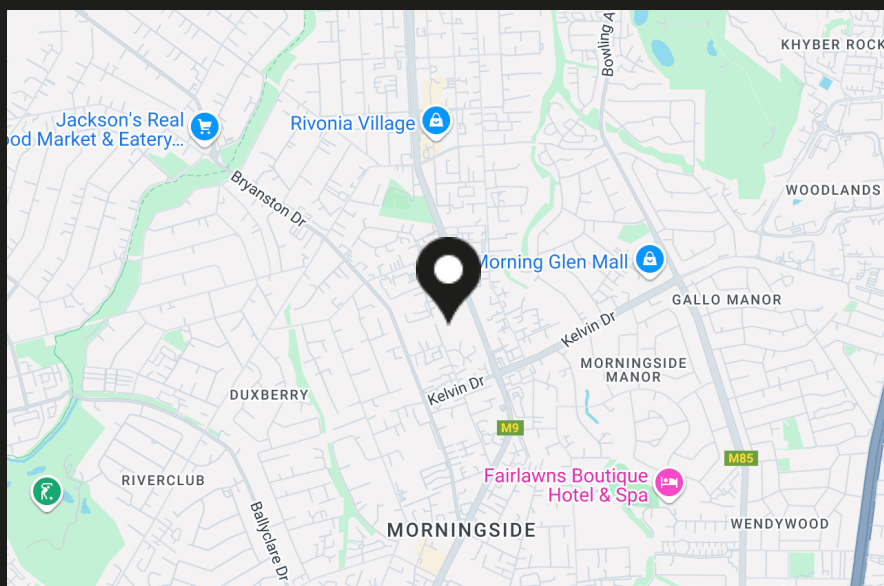
Exterior

Security	No	Pool	No
Views	False		



Morningside at a glance

Morningside Morningside is one of the most conveniently located suburbs in Northern Johannesburg, having the Sandton CBD on the one side and the lush residential areas of Morningside Ext 40, Duxberry and Benmore on the other. This location makes it the quintessential mixed-use neighbourhood, recently described as a power node. Morningside proper straddles both sides of Rivonia Road, providing access to many major routes. The suburb was established on a portion of the previous Zandfontein Farm in the 1950's. and has become one of the most affluent residential and commercial suburbs in Africa. Convenience and lifestyle are two of the suburbs' most popular features. Apart from central location and proximity to the Sandton CBD, it also provides easy...



Kelly Garcia
Candidate Property
Practitioner

☎ 064 053 3348

✉ kelly@hamiltons.co.za