



A sensational and unique home in the  
Hamilton Village Security Enclosure in  
Bryanston East

4 5.5 6

A contemporary masterpiece set within the Hamilton Village Security Enclosure in Bryanston East on over 1800sqm of established, irrigated grounds with fire-pit, courtyards and fountains. Offering fastidious attention to every detail, this bespoke home offers ample accommodation coupled with workmanship and precision. Feature incl. bulkhead ceilings, off-shutter concrete, home theatre, airconditioning, pizza oven, wine cellar, surround sound, central vacuum. From the volumed entrance with floating staircase, numerous open plan receptions spill to the entertainer's enclosed patio with built-in gas braai overlooking gardens and pool. Receptions seamlessly merge with the outdoors. Gourmet kitchen with central island, gas hob, integrated Siemens appliances and sep scullery. Offering 3 Double bedroom suites, including indulgent main en-suite. Study / pyjama lounge. Plus separate duplex apartment with lounge / dining room, kitchen, en-suite bedroom, guest bathroom. Total of 5.5 Bathrooms....

## Features

### Interior

Bedrooms	4	Bathrooms	5.5
Kitchens	2	Recep. Rooms	5
Studies	1		

### Sizes

Internal	1015m <sup>2</sup>
External	1832m <sup>2</sup>

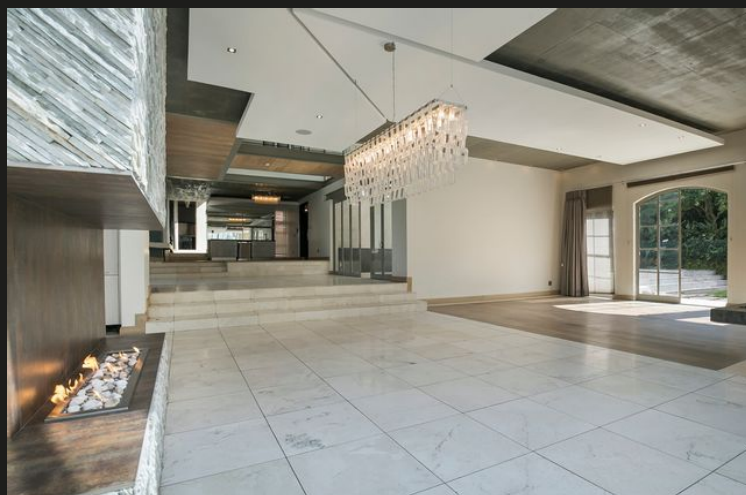
### Exterior

Garages	6	Domestic Accom.	1
Security	Yes	Pool	Yes
Views	False		

### Financial

Rates	7000.00
Levies	1400.00

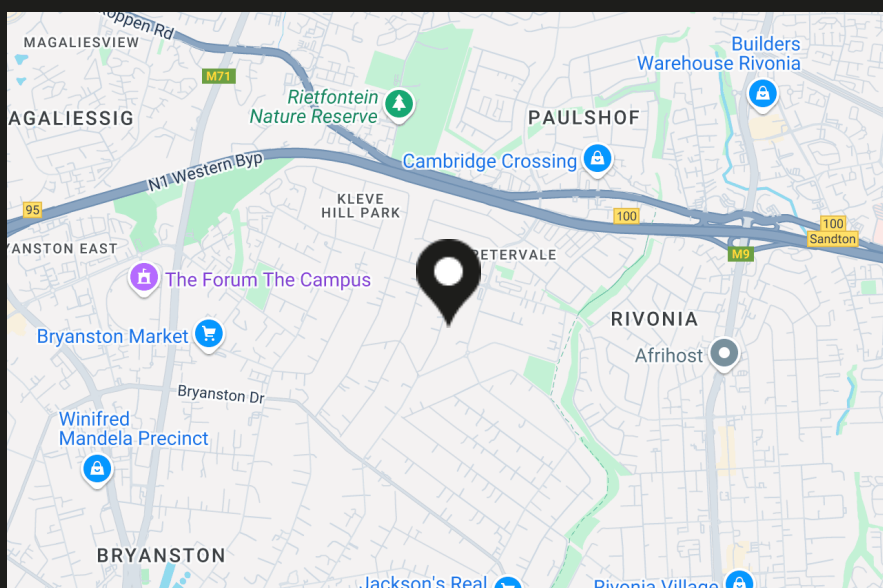




## Bryanston at a glance

**Bryanston: A Prestigious Suburb Blending Luxury, Convenience & Lifestyle** Aerial view of Bryanston from Hamilton's Property Portfolio house Image source: <https://tinyurl.com/5ebbesfe>

Bryanston is a prestigious suburb that combines refined living with everyday convenience. It's proliferation of trees contribute to Johannesburg's accolade of being recognised as the biggest urban forest in the world. Close to Sandton and areas like Sandhurst and Fourways, it offers a unique mix of elegant homes, robust community infrastructure and excellent amenities - all of which appeal to homeowners, families and investors alike. Its strategic location, proximity to top schools, reliable healthcare facilities and efficient transport links further...



**Pauline Cribb**  
Property Practitioner



0825736322



[pauline@hamiltons.co.za](mailto:pauline@hamiltons.co.za)



**Christie Ford**  
Property Practitioner



0826764699



[christie@hamiltons.co.za](mailto:christie@hamiltons.co.za)