



An iconic Bryanston East residence offering unparalleled luxury, privacy, and self-sufficiency

5 6 6

This exceptional 2,150m² residence, "The Tree House", situated on a sprawling 10,538m² park-like estate in one of the top roads in Bryanston East, presents a rare opportunity for the discerning buyer. Enjoying a prime position within this sought-after suburb, the property offers a tranquil private retreat with a variety of shopping centres, public and private schools, the highway, and the Sandton CBD, all within a few minutes' drive. Inside, a grand entrance hall with a wood-burning fireplace and spiral staircase sets the tone. The home offers five luxurious bedroom suites in the main residence, plus a cottage and a guest flatlet, each with separate entrances, providing ample accommodation. A well-appointed study, formal lounge with exposed trusses and French doors, and elegant dining room offer sophisticated living spaces. The modern eat-in kitchen seamlessly connects to a private courtyard featuring tranquil water features, a koi pond, and a central gazebo. Separate scullery....

Features

Interior

Bedrooms	5	Bathrooms	6
Kitchens	1	Recep. Rooms	5
Studies	1		

Sizes

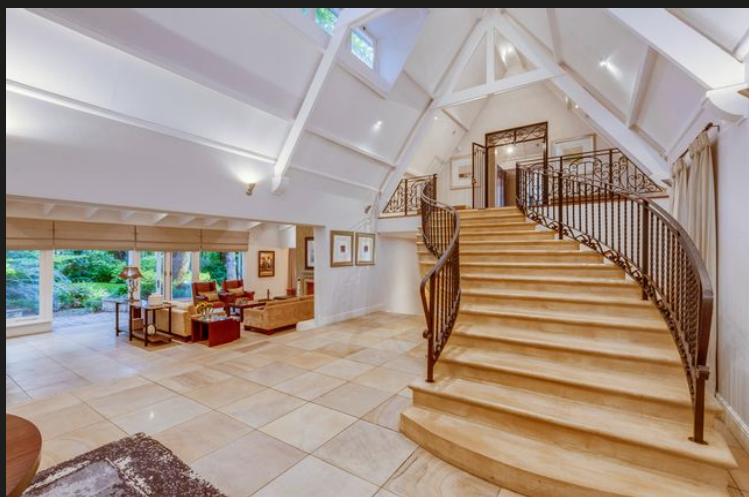
Internal	2150m ²
External	15380m ²

Exterior

Garages	6	Domestic Accom.	2
Security	Yes	Pool	Yes
Views	True		

Financial

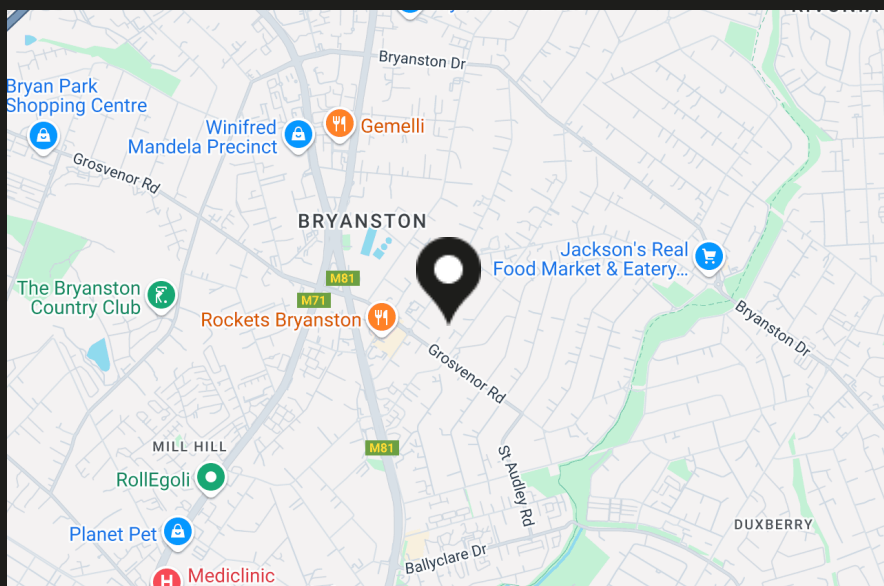
Rates	20938.00
-------	----------



Bryanston at a glance

Bryanston: A Prestigious Suburb Blending Luxury, Convenience & Lifestyle Aerial view of Bryanston from Hamilton's Property Portfolio house Image source: <https://tinyurl.com/5ebbesfe>

Bryanston is a prestigious suburb that combines refined living with everyday convenience. It's proliferation of trees contribute to Johannesburg's accolade of being recognised as the biggest urban forest in the world. Close to Sandton and areas like Sandhurst and Fourways, it offers a unique mix of elegant homes, robust community infrastructure and excellent amenities - all of which appeal to homeowners, families and investors alike. Its strategic location, proximity to top schools, reliable healthcare facilities and efficient transport links further...



Regan Harris
CEO



0823206464



regan@hamiltons.co.za



Sian Harris
Candidate Property
Practitioner



0823448653



sian@hamiltons.co.za