



3 Bedroom House For Sale in Twin Rivers 3 3.5 2

Milkwood Estate - Excludes Vat – no transfer duty. Welcome to this single-story, beautifully finished home in the prestigious Milkwood Estate, offering the perfect blend of luxury, comfort, and serenity. Milkwood Estate is a cluster of 6 contemporary homes set within the charming grounds of Twin Rivers Estate. Bordered on one side by the Bitou River and the other by the Keurbooms River, homeowners can enjoy all the activities that the rivers offer, from fishing to canoeing or anything else the heart desires. Rolling lawns, indigenous bush and free roaming buck enhance the sense of living with nature. This modern home features 3 spacious ensuite bedrooms with a luxurious free-standing bath in the main bathroom. A light, neutral colour palette throughout the home gives a sense of space, and large windows allow sunlight to stream into every room. Bathroom fittings throughout the home add a touch of class and glamour. The open-plan living area seamlessly integrates the kitchen, dining,...

Features

Interior

Bedrooms	3	Bathrooms	3.5
Kitchens	1	Recep. Rooms	2

Exterior

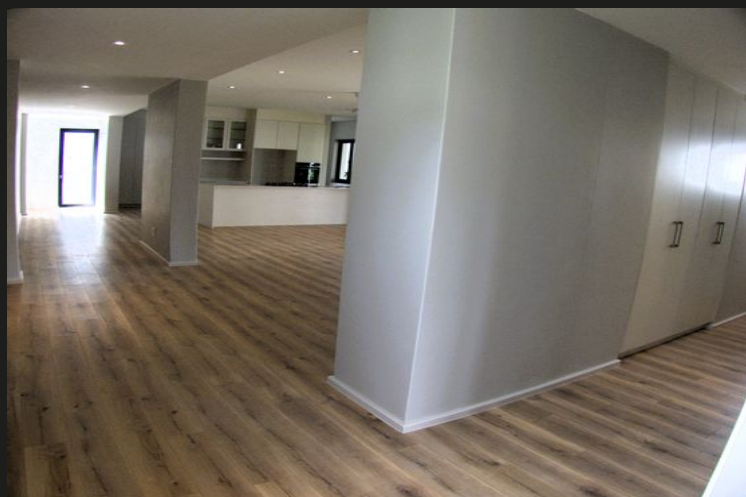
Garages	2	Security	No
Pool	Yes	Views	True

Sizes

Internal	265m ²
External	600m ²

Financial

Rates	5500.00
Levies	1900.00



Twin Rivers at a glance

Redefining Coastal Opulence: A Deep Dive into Plettenberg Bay There's something mesmerising about Plettenberg Bay. Many know it simply as Plett, a coastal haven in the heart of the Garden Route that delights visitors with shimmering waters, powdery beaches and a captivating mix of serenity and sophistication. Locals often say once you've watched the sunrise over Lookout Beach or spotted dolphins cresting the waves, you'll understand why so many choose to stay. The welcoming atmosphere, tempered by touches of luxury, is exactly why people from all over the world flock to Plett, whether for a quick getaway or to put down permanent roots. A Scenic Haven Arriving in Plettenberg Bay is like stepping into a masterclass in natural splendour. The ocean transitions from bright...



Mandy Leigh
Property Practitioner -
Plettenberg Bay

☎ 083 299 9222

✉ mandy@hamiltons.co.za