

Jointly marketed By Hamilton's

5 4 2

Immaculate and Spacious Home in Knysna Heights This beautifully maintained, low-maintenance, five-bedroom, four-bathroom house is perfect for a large family or for those who need space to work from home. Located in the desirable Knysna Heights suburb, this home offers a blend of relaxed living and practical comfort, with a great flow that connects all the spaces seamlessly. The heart of the home is the modern, well-appointed kitchen, which flows into a large, inviting entertainment area. This central living space is perfect for hosting gatherings, with plenty of room for both dining and relaxing. An exceptional feature of this property is the covered patio, which has been transformed into an additional living space. Complete with a built-in braai, this versatile space, offers a perfect spot for casual meals or a cozy evening with family and friends. This home is designed for easy living, with a focus on functionality and comfort. With multiple bedrooms and bathrooms, everyone...

## Features

### Interior

Bedrooms	5	Bathrooms	4
Kitchens	1	Recep. Rooms	3

### Exterior

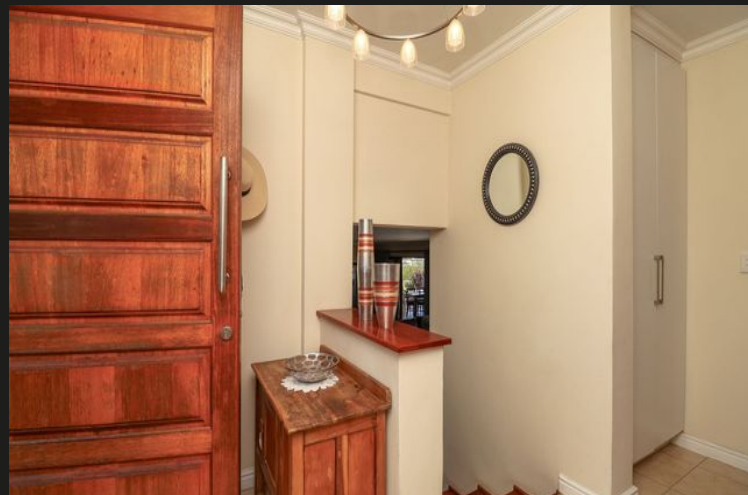
Garages	2	Security	No
Pool	No	Views	False

### Sizes

Internal	350m <sup>2</sup>
External	1018m <sup>2</sup>

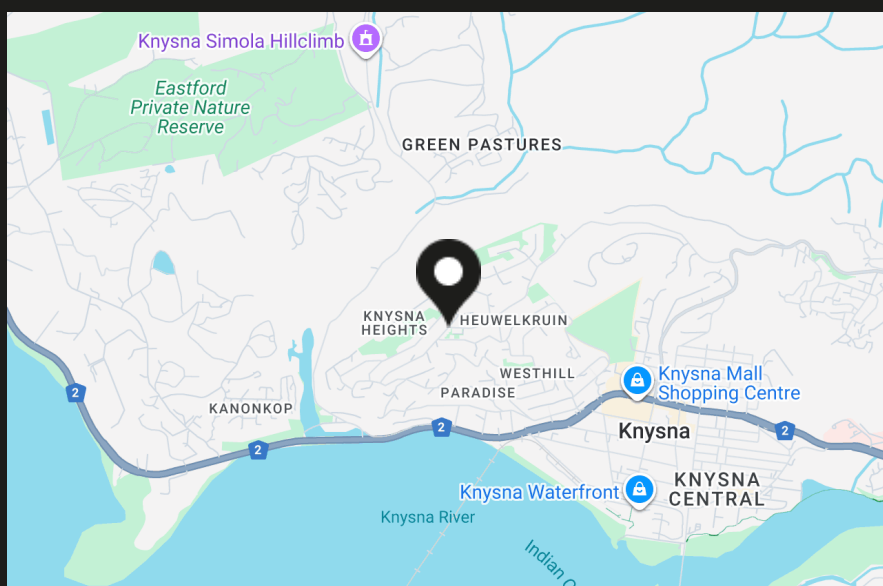
### Financial

Rates	1800.00
-------	---------



## Knysna Heights at a glance

Knysna is considered the "Pearl" of the Garden Route. It is made up of various suburbs which stretch around our famous lagoon from the Western Heads to the Eastern Heads. Offering activities for all age groups, from hiking, cycling, fishing, boating, walking, bowling, tennis, to the refinement of gentle activity in a lifestyle retirement village. Knysna is a short 60 kms from the George Airport - or the even-closer Plettenberg Bay airport - for those wishing to commute by air. Brenton on Sea hugs the coastline with access to the Brenton beach. There are freehold homes as well as several apartment blocks. While the Brenton on Sea Hotel offers a delightful spot to have meals or an evening drink. Brenton on Lake borders the lagoon with direct access to the water...



**Simon Harris**  
Property Practitioner



0823380747



simon@hamiltons.co.za