

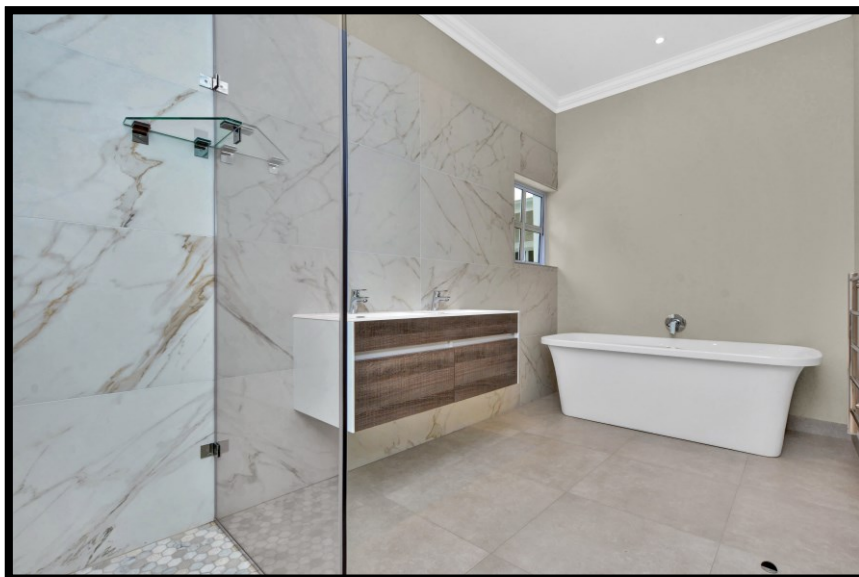
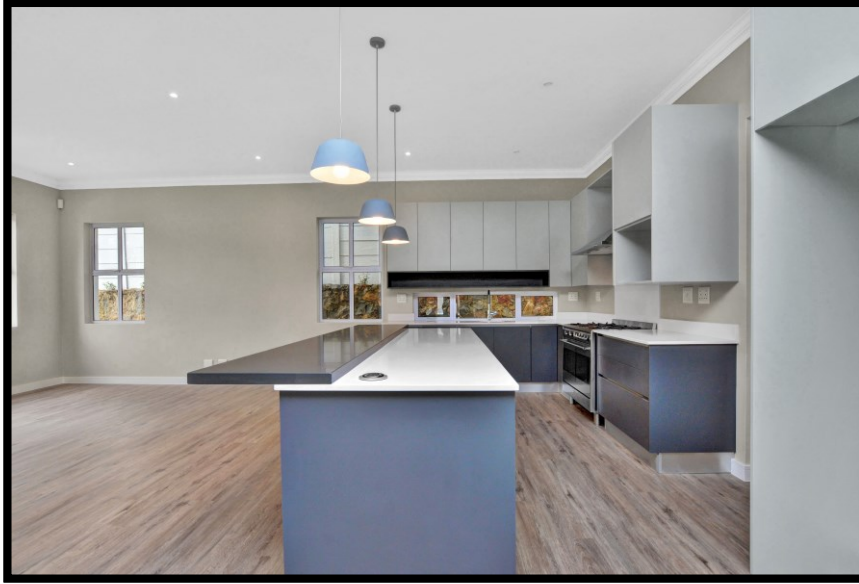
# 47 Cowley Row

- Offering 5 exquisite Farm Style clusters
- Secure estate living with controlled access
- Generous gardens
- Open plan luxurious living
- Spacious en-suite bedrooms
- Options of layouts, with personal choice finish selection
- Land from R 950 000
- Building packages, all inclusive, from R11 275/m<sup>2</sup> with generous allowances
- Pricing inclusive of VAT, Engineering fees, NHBRC enrolment and Architect fees. Excluding Conveyancer fees
- Ideally located in Petervale, Bryanston
- Designs by VENUi ARCHITECTS
- Construction by RAYCON CONSTRUCTION
- Transferring Attorneys: Susan B Cohen Attorneys

## Features

- White Aluminum windows and doors
- Frameless panel showers
- Solar or Heat pump geysers
- 3m High ceilings
- 3 Phase power





**Photos of similar completed home**

Although every care has gone into the publication of facts regarding the property, Hamilton's Property Portfolio, nor the Agent accepts any responsibility for the correctness hereof.  
E & OE

Renders shown are artist impressions